



AUTO TRANSFORM

Engineered Vehicle Innovation

HVAC - Advanced :

In Side Sliding Door

- 5 x drawers
- 4 x pull out plastic tool cases integrated into shelving system
- 2 tiers of open shelves with dividers on top of drawers
- Tie straps and D-rings for securing for 5foot ladder up against bulkhead

Rear Area

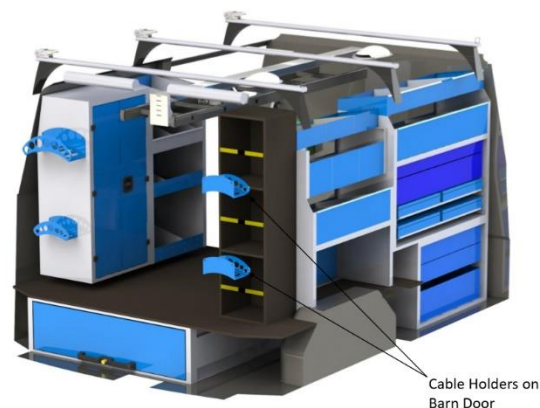
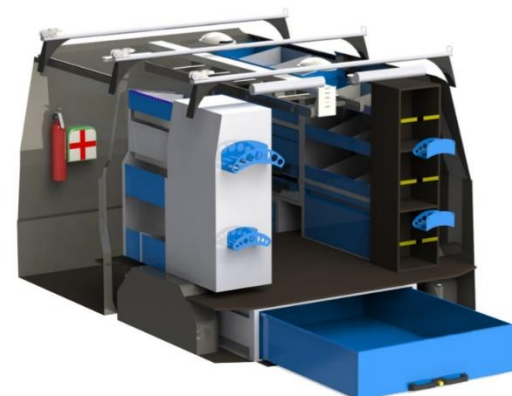
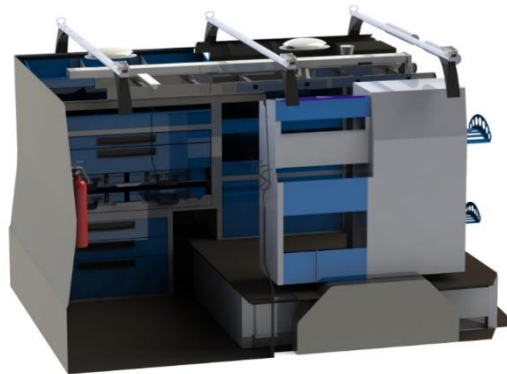
- Underfloor pull out drawer with integrated locking unit - 1100mm wide x 1400mm deep x 290mm high with rubber mat and dividers
- 12mm Grip plywood deck on top of false door

Passenger Side

- Lockable cabinet unit to hold D-Size and Porto Gas bottle mm. 507x966x353 - with additional rubber seal to make fully sealable unit. Hose going down from cabinet through floor to underside of vehicle
- 4 Tier open shelf racking with dividers and rubber matting
- 1 x Large Cable / Hose holder
- 1 x Medium Cable / Hose holder

Driver Side

- 3 Tier rack Gas bottle rack stacked end to end with strap to secure
- 4 tier open shelving with dividers



Cable Holders on
Barn Door

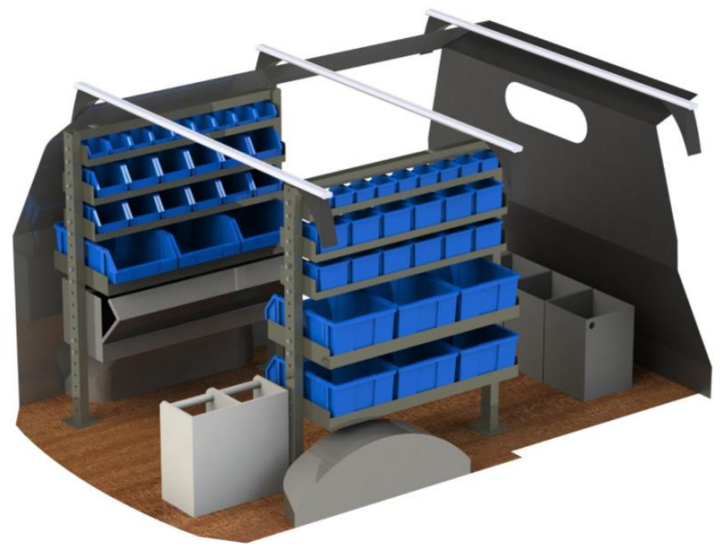
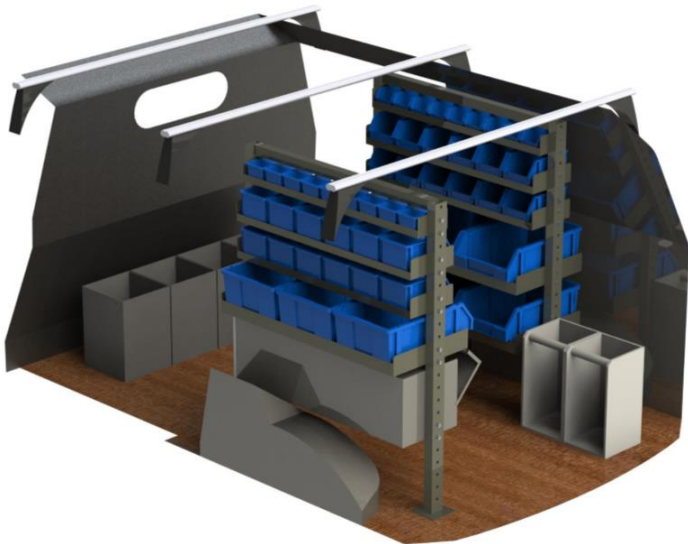


AUTO TRANSFORM

Engineered Vehicle Innovation

HVAC - Standard:

- Fibreglass Bulkhead behind driver & passenger seats
- Tow bar and wiring
- Standard plywood floor in rear of van
- 3 x Bar heavy duty roof racks
- 3 x Stainless steel ratchets with tie straps
- 3 x Eye bolt tie hooks
- 1 x Tradesman Shelving unit in rear right-side position
- Lockable tool box incorporated into rear right-side shelving unit
- 1 x Tradesman Shelving unit in front right-side position facing out sliding door
- Refrigerant bottle holder (Secures 3 x bottles)





AUTO TRANSFORM

Engineered Vehicle Innovation

HVAC - Ute:

Out LHS Opening Window

- 1 x drawer unit 100mm high
- 2 x pull out tool cases integrated into shelving system
- 1 tier of BOC31 - 310mm deep plastic bins

Out Rear Door

- Underfloor pull out drawer with integrated lock unit - 650mm wide x 1600mm deep x 290mm high with dividers
- 12mm Grip plywood deck on top of false door
- Lockable cabinet unit to hold Gas bottle mm. 507x720x353 - with additional rubber seal to make fully sealable unit. Hose going down from cabinet through floor to underside of vehicle

Out RHS Opening Window

- Tray to contain small gas bottles up against cab side of cabin
- 3 Bar commercial grade roof rack with 3 x ratchets and straps and eye bolts
- 2 x rollers on rear bar
- Tow Bar and wiring
- Auto Transform Canopy

