

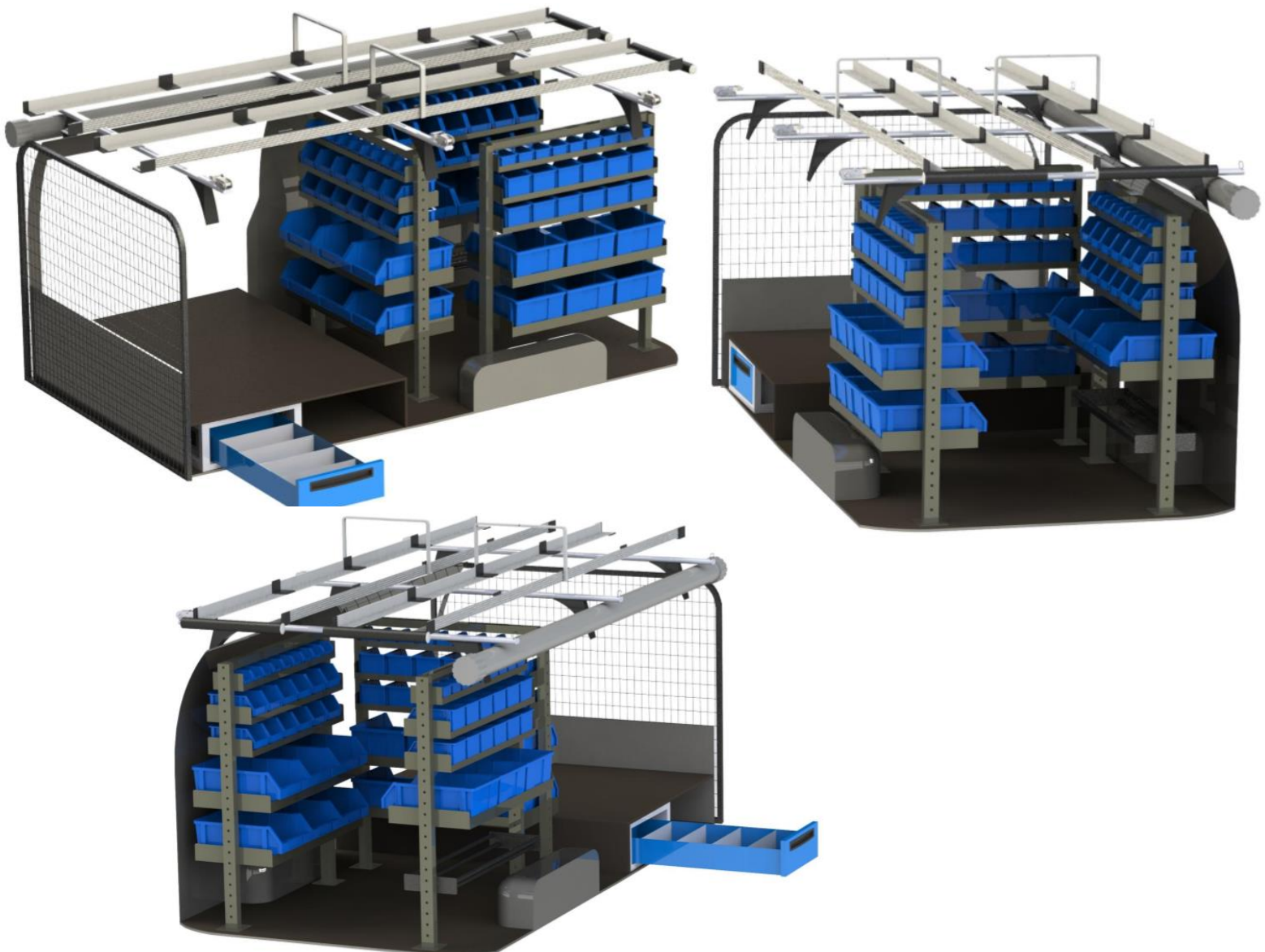


AUTO TRANSFORM

Engineered Vehicle Innovation

Line Servicing – Standard Van:

- 3 x TS150 Trade Shelving (5 tier)
- Grip ply false floor with 1 x underfloor small drawer
- Storage space next to draw for equipment
- Front mount mesh barrier
- Grip ply false floor
- 3 bar roof rack with ratchets and eyebolts
- 2 x ladder rack, roller and buffer





AUTO TRANSFORM

Engineered Vehicle Innovation

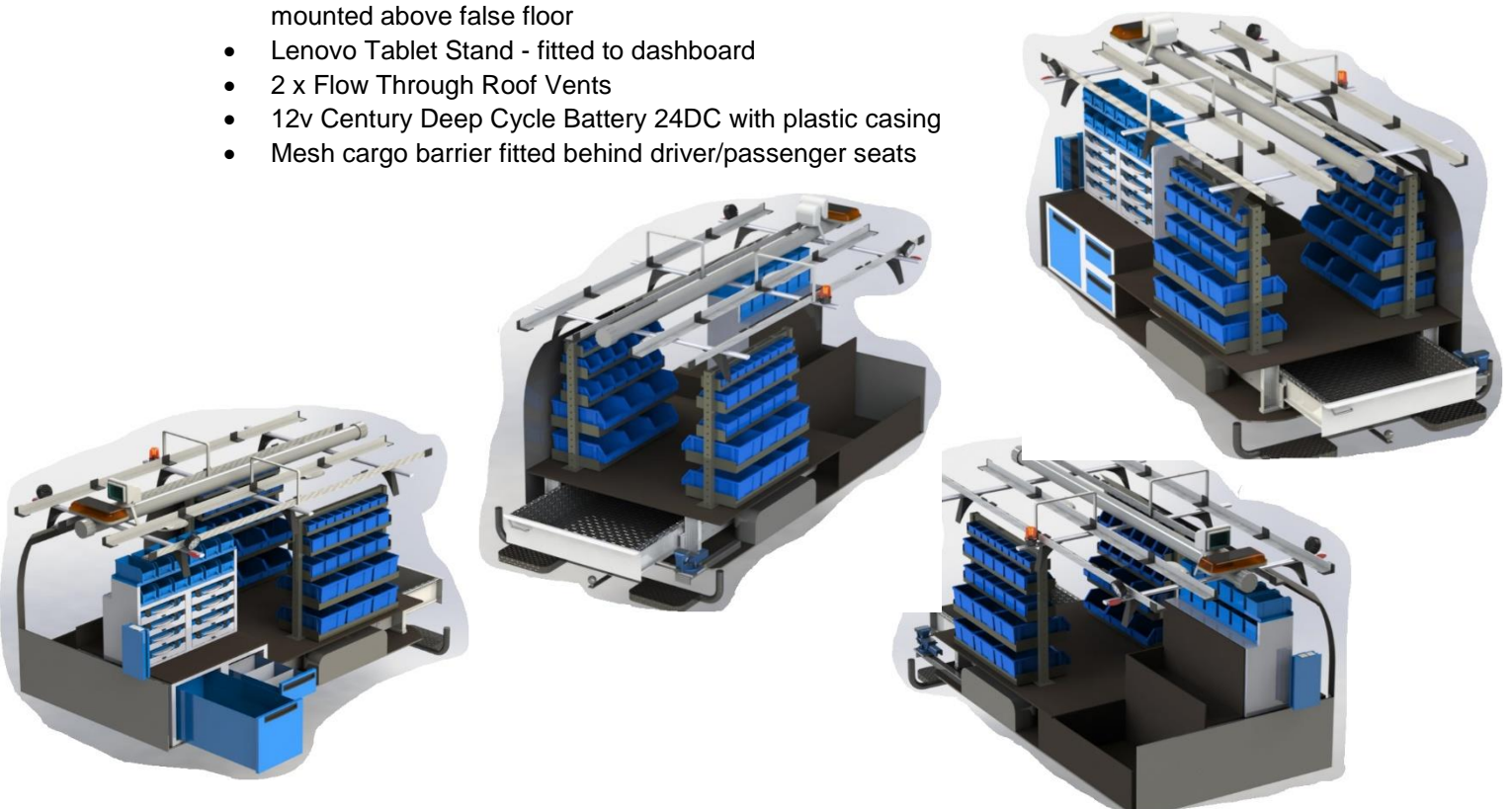
Line Servicing – Advanced Van:

- 2 x TS150 KIT - 5 Tier Shelf Unit with Plastic Bins
- 3 Big Trays and Bins, 2 Medium and 1 Small
- Positioned over wheel arches on LH and RH sides
- 12mm Grip plywood floor throughout rear area and on false floor over pull out drawer in side door
- Large Underfloor unit drawer with rubber mat and divider out LH sliding door
- 3 Bar commercial grade roof rack - AT Style with 80mm leg
- 3 x Eyebolts on passenger's side and 3 x Ratchets in centre
- Sliding ladder rack system on the driver's side - 3m Extension Ladder system with sliding rails
- Tow bar and wiring with integrated Step and rear sensors
- 9kg Gas Bottle Holder fitted to rear on the passenger's side
- Jet Rack - Horizontal Ladder Holder system internally mounted in the centre of the roof out the rear of van
- Round LED work lamp Flood Beam
- LED Beacon Amber 150mm High Round (KAS H616B) Mounted to Front roof rack bar on the driver's side



Line Servicing – Elite Van:

- Elite Shelving System - 8 x Service cases integrated into drawer runners facing out passenger's side sliding door
- Drawer system out passenger's side sliding door:
- 12mm Grip plywood benchtop
- Alu. Drawer System - 1600mm deep x 1000mm wide x 300mm high with false floor 12mm Grip ply facing out rear door
- 12mm Grip Plywood Box on space behind drawers on Drivers side sliding door area
- Tow Bar - 3.5 tonne capacity with integrated step
- Lightbar fitted front centre above ladder rack
- Fire Extinguisher
- LED interior strip lighting on roof in each 1/3 of van cargo area
- 3 Commercial Grade Roof Rack AT - 150mm high legs
- Rail Set 3 Bar Extension Ladder 3M
- LED Swivel Lamp 470x35x33mm Multivolt fitted to LH and RH side, front roof bar
- Vice - slide out rear
- Conduit Pipe 3m long mounted to centre between ladder slides
- SinergePower Inverter - 2000W Multi Sinewave 12v - 240v
- PIR Alarm
- Lightbar fitted front centre above ladder rack
- 2 x Slimline low-profile warning light mounted under rear bar on roof racks
- LED Cab light fitted on roof centre cab
- LED Amber flashing beacon on Drivers side - low profile
- Remote Control Search lamp 12V (code 39-72800) - fitted above conduit pipe in centre
- Trade Shelving System TS150 5 tier - 2 large, 2 medium and 1 small on either side at rear, mounted above false floor
- Lenovo Tablet Stand - fitted to dashboard
- 2 x Flow Through Roof Vents
- 12v Century Deep Cycle Battery 24DC with plastic casing
- Mesh cargo barrier fitted behind driver/passenger seats



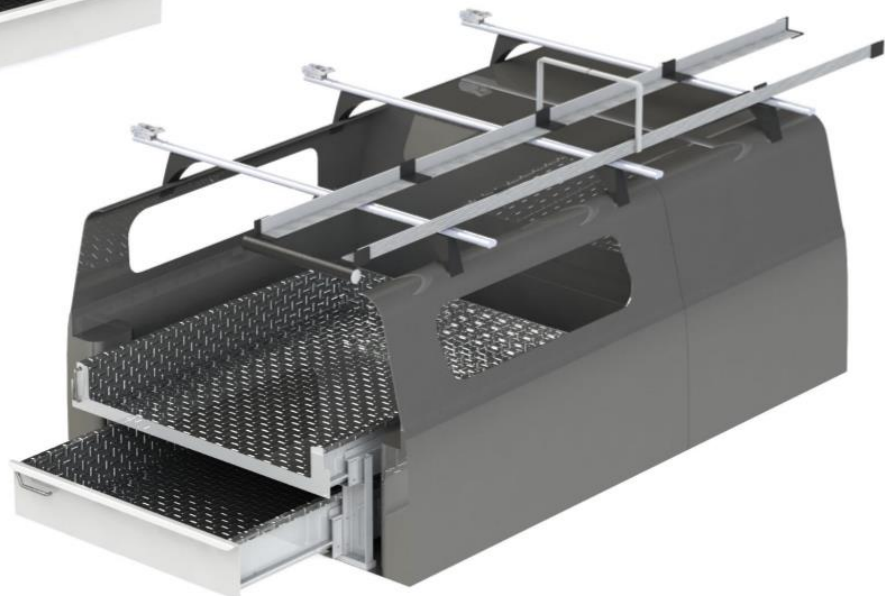
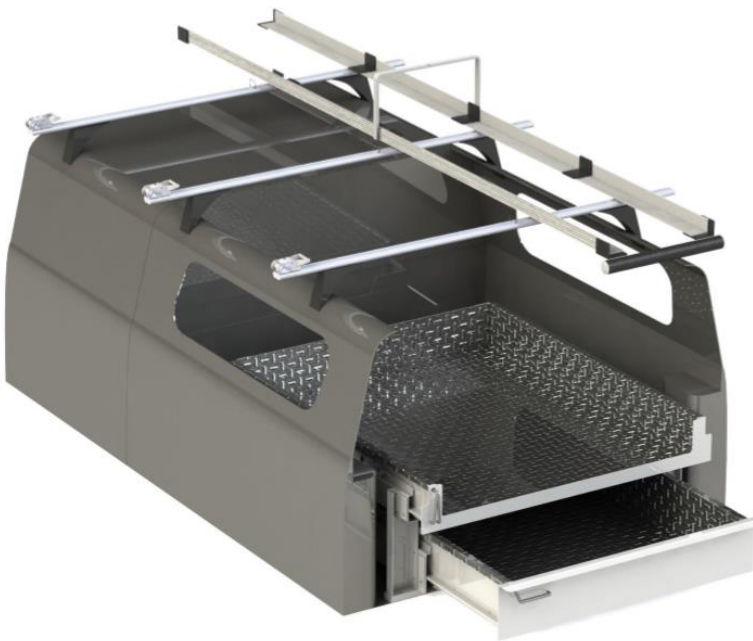


AUTO TRANSFORM

Engineered Vehicle Innovation

Line Servicing – Basic Ute:

- Double drawer unit to suit double cab Ute
- Sliding top platform
- Integrated lock unit
- Auto Transform Trade Canopy
- 3 Commercial Grade Roof Rack - HD Whipbar with tracking rail on cab
- 3.0m Extension Ladder Multi-Slide Rails
- 3 x Stainless Steel Ratchet with straps and eyebolts
- Tow Bar - Ford Ranger 3.5 tonne capacity





AUTO TRANSFORM

Engineered Vehicle Innovation

Line Servicing – Advanced Ute (Box Body):

- Auto Transform Box Body to suit vehicle size mounted on Aluminium flat deck
- 3mm Aluminium Plate colour coded to suit
- Gull Wing Doors on LH, RH side and Rear
- One central lock handle in the doors, gas struts
- LED strip lighting to illuminate for each compartment to facilitate evening/night work - with a separate on/off switch
- Central Locking (Optional)
- 3 Bar Commercial Roof Racks
- 3 x Stainless Steel Ratchet with straps and eyebolts
- 3 Tier Open shelving with rubber mats and dividers on RHS
- 3 Tier drawers out rear door
- Custom shelving unit on LHS with 2 x tiers of plastic bins, 1 x tier of open shelving with rubber mats and dividers with drawers and over shelving
- 2 x ladder holder and conduit pipe
- 2 x LED Work lamps





AUTO TRANSFORM

Engineered Vehicle Innovation

Line Servicing – Elite Ute (Box Body):

- Auto Transform Box Body to suit vehicle size mounted on Aluminium flat deck
- 3mm Aluminium Plate colour coded to suit
- Gull Wing Doors on LH, RH side and Rear
- One central lock handle in the doors, gas struts
- Full length integrated tie rails
- Step at front and rear on both sides of deck for easier roof access
- Locking T- Latch, One central lock in the door with Central Locking unit, gas struts
- LED strip lighting to illuminate for each compartment to facilitate evening/night work - with a separate on/off switch
- Existing reversing camera re-installed on the service body
- Tow Bar and Wiring, removable tongue
- 3 Bar Commercial Grade Roof Rack - 2 Bar on Box Body, 1 Bar on Cab Roof - put 80mm spacer on rear most leg for gap for tie strap
- Aluminium lockable underdeck drawer
- 2 LED Swivel Lamp - 1 fitted either side to roof of Box Body
- 2 x Round LED Work lamp Flood Beam - 1 fitted rear left, 1 fitted front right
- Grinder / Vice Slide
- Parallel vice in forged steel 125 mm. with pipe jaws
- Elite Shelving System - 8 x Service cases integrated into drawer runners facing out rear door
- 2 Tier of open shelves with rubber mat and 8 x Aluminium dividers
- 8 x VP6617 - Plastic Tool Case with 17 container inserts for small parts and consumables

