
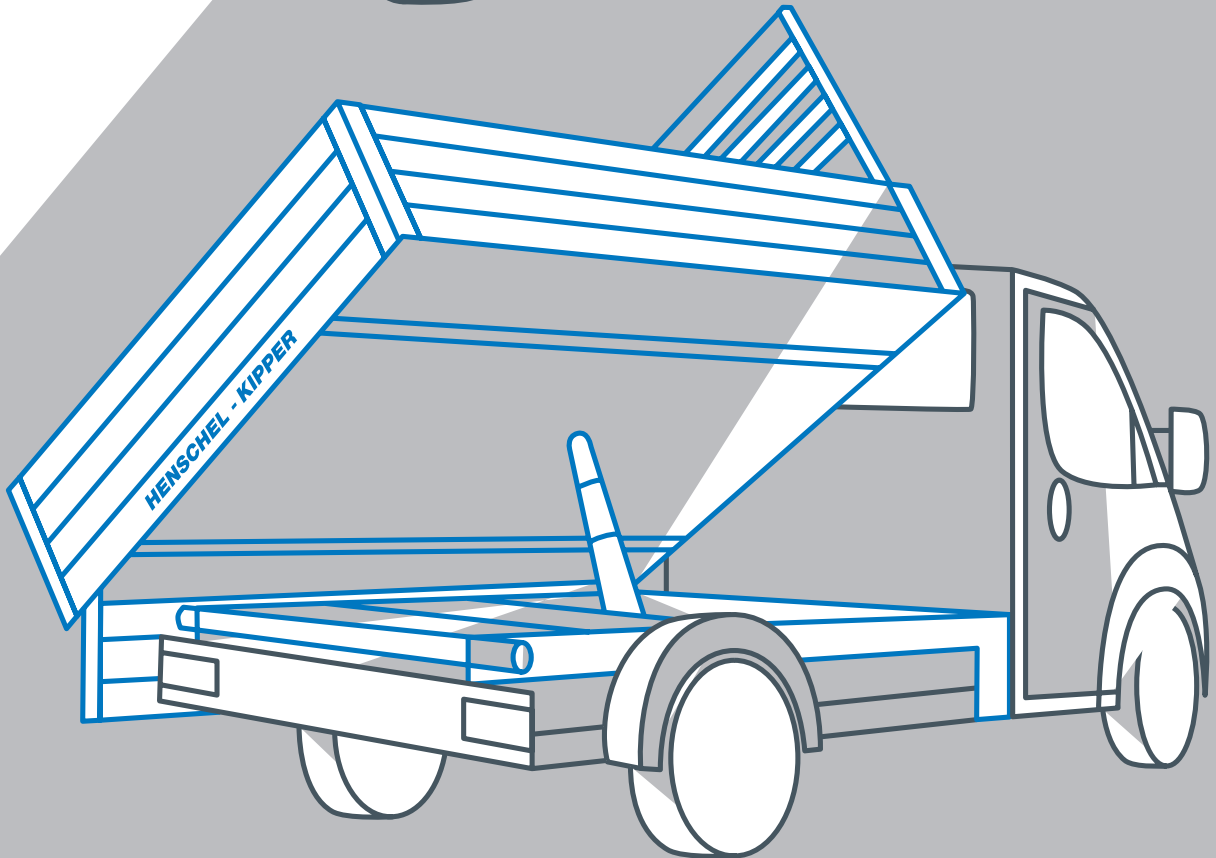
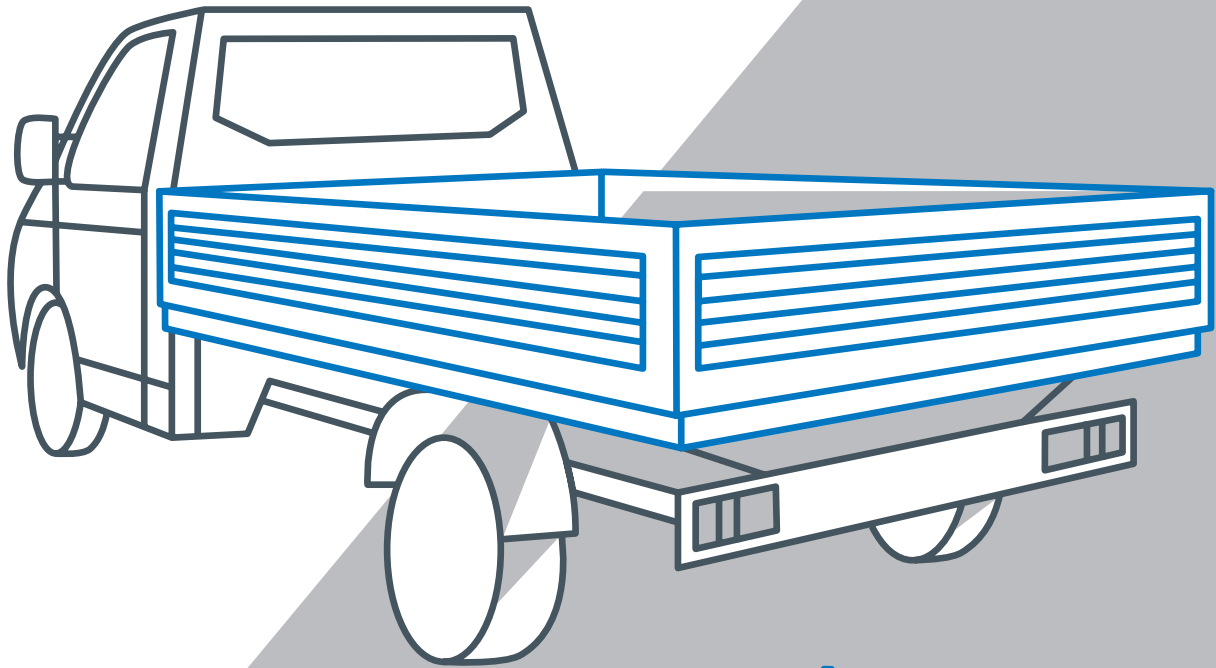


**HENSCHEL**  
ENGINEERING AUTOMOTIVE

by  **AUTO  
TRANSFORM**  
Engineered Vehicle Innovation



## WELCOME TO HENSCHEL ENGINEERING AUTOMOTIVE

Our world is the production of superstructures and accessories for light commercial vehicles – we are the market leader in Europe for 3-way tippers and light-weight platform bodies for light commercial vehicles.

Due to our reliable quality, Volkswagen, Mercedes-Benz, PSA Group, Iveco and others have been our loyal clients for years.

Our success is based on many years of experience and passion in developing innovative solutions.

We offer consultancy services with respect to individual optimisation possibilities tailored to the customers' needs, as well as a wide range of spare parts with after-sales service.

### HENSCHEL 3-WAY TIPPER (p.4)

- › For light commercial vehicles with a gross vehicle weight of up to 5.5 t.
- › Fully integrated, innovative locking system, optimal handling.
- › HENSCHEL corrosion protection, best anti-corrosive properties in its class.

### HENSCHEL ALUMINIUM PLATFORM BODIES (p.10)

- › For light commercial vehicles with a gross vehicle weight of up to 3.5 t.
- › Reliable and durable platform bodies.
- › Optimised load-carrying capacity due to lightweight construction without reducing the quality and durability compared to conventional steel bodies – thus gains 30% advantage in load-carrying capacity.

### OPTIONS AND ACCESSORIES (p.16)

- › Foliage grip extensions, bulkhead-gantry, tarpaulin framework, extension of the subframe for mounting a loading crane or tool box behind the driver's cab, and many others.

HENSCHEL aluminium platform bodies





HENSCHEL 3-way tipper

Tarpaulin framework with tarpaulin (optional)



Foliage grid extension (optional)



## HENSCHEL 3-WAY TIPPER

We produce 3-way tippers for all manufacturers of light commercial vehicles with a gross vehicle weight of up to 5.5 t.

Thanks to the reliable quality of our products, we have been a supplier of original (OEM) tipper bodies for many years, e.g. for VW, PSA Group and Iveco.

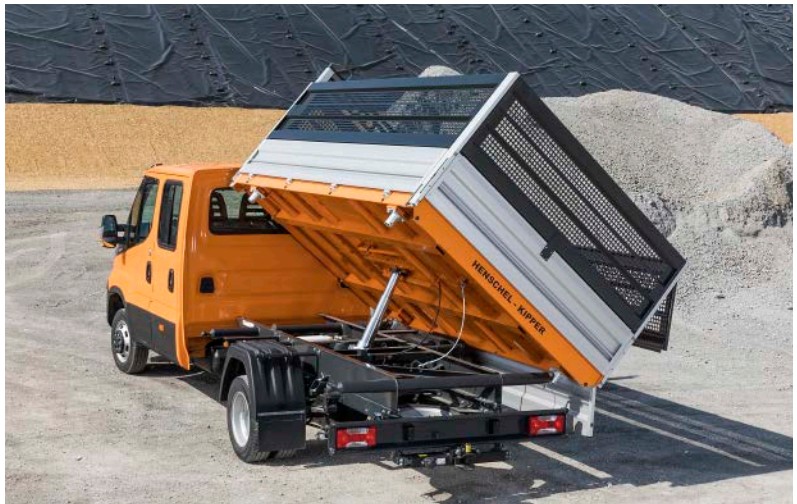
### BASIC ADVANTAGES OF THE HENSCHEL 3-WAY TIPPER

- › anti-corrosion protection
- › locking system
- › low weight: for example, the weight of a 3.00 m long tipper body is only 485 kg

### TECHNICAL DATA

Gross vehicle weight	up to 5.5 t
Load-carrying capacity	2450 kg
Length	up to 4300 mm
Width	up to 2140 mm other dimensions on request
Side boards	thickness 25 mm height 400 mm anodised aluminium or thickness 33 mm height 400 mm powder-coated steel
Floor	2.5 mm steel
Locking system	Armaton™ 4000 XF





## HENSCHEL 3-WAY TIPPER

### SUBSTRUCTURE

- › Galvanised steel makes the tipper more durable, and additionally protects it against corrosion.
- › Consoles welded onto the subframe are factory-integrated with the tipper and are optimally matched to the respective vehicle. This ensures the quick and easy installation of the body onto the vehicle.
- › Nano-ceramic coating, which is then treated with 2 layers of powder coating, ensures the optimal protection against corrosion.
- › Fender mounting brackets have been prepared for each type of vehicle. Fenders are optional.

### PLATFORM

- › Galvanised steel structure and floor made of wear resistant steel sheet with a thickness of 2.5 mm.
- › The mounting brackets (according to DIN 75410-1 / EN 12640 – for securing the load in compliance with regulations) are embedded in the floor and noise dampened when not in use with specially mounted rubber shock absorbers.
- › The anodised side boards made from extruded aluminium profiles are lightweight and corrosion resistant.
- › The side boards fold down and, when necessary, are easily removable without the use of additional tools.
- › The rear board is foldable and swingable by a manual locking gear. The rear locking system pillars are fully removable. Thus, there are no obstacles during loading when the boards are folded down.
- › The innovative locking system is easy and particularly convenient and intuitive to use.
- › The tipping direction can be changed by use of pins – extremely easy to use.
- › The simple, yet effective protection system using an inserted pin prevents incorrect tipping direction (s.p.9).
- › Optional is a extension of the subframe, for mounting a loading crane or tool box behind the driver's cab.





Rear board and locking system pillar removed.

Armaton™ 4000 XF locking system

## HENSCHEL 3-WAY TIPPER

### PAINT COATING

- › The paint coating of the galvanised steel plate gives excellent protection against corrosion.
- › After nano-ceramic coating, 2 layers of powder coating are applied to the HENSCHEL 3-way tipper.
- › As an eco-friendly alternative, the nano-ceramic pre-treatment is equivalent to cathodic coating (KTL). It is free from phosphates and heavy metals. It reduces the energy consumption and allows for environmentally-friendly disposal.
- › The standard colour is dark grey (MB 7350). Special colours are possible in all available RAL colours.
- › The bottom of the bodywork is afterwards preserved with wax to provide even better protection against corrosion.

Of course, we also supply accessories: for example, bulkhead-gantry, tail gantry rack, fenders or foliage grid extension.

### HYDRAULIC SYSTEM

- › Electro-hydraulic drive with a long-life, chrome plate hardened platform-lifting cylinder.
- › The emergency stop is controlled by the pressure control valve.
- › Comfortable operation with the remote control device, which can be mounted and wired up to the inside of the vehicle's cab.
- › The connecting cables are supplied with the tipper as a complete kit, including operating instructions.
- › The tipper is ready to use as soon as the battery is connected.

Remote control device







Chassis with tipper platform-lifting cylinder with electro-hydraulic drive

Pin to determin the tipping direction



Lashing ring with belt for securing the load



## HENSCHEL PLATFORM BODIES

We manufacture aluminium platform bodies in a light-weight structure as an alternative to standard OEM steel platforms. Suitable for all popular mass-produced light commercial vehicles. HENSCHEL aluminium platform bodies are suitable for light commercial vehicles with a gross vehicle weight of up to 3.5 t.

Depending on the body type, HENSCHEL aluminium platform bodies are lighter than the conventional steel bodies by up to 30%. For example, the 2.00 m-long platform body weighs only 140 kg.

If requested, the platform body length can be ordered in bespoke lengths, in 100 mm intervals.

### TECHNICAL DATA

Gross vehicle weight	up to 3.5 t
Length	up to 6200 mm
Width	up to 2230 mm
Side boards	thickness 25 mm height 400 mm anodised aluminium
Floor	plywood (15 mm)
Locking system	Kinnegrip™ T50





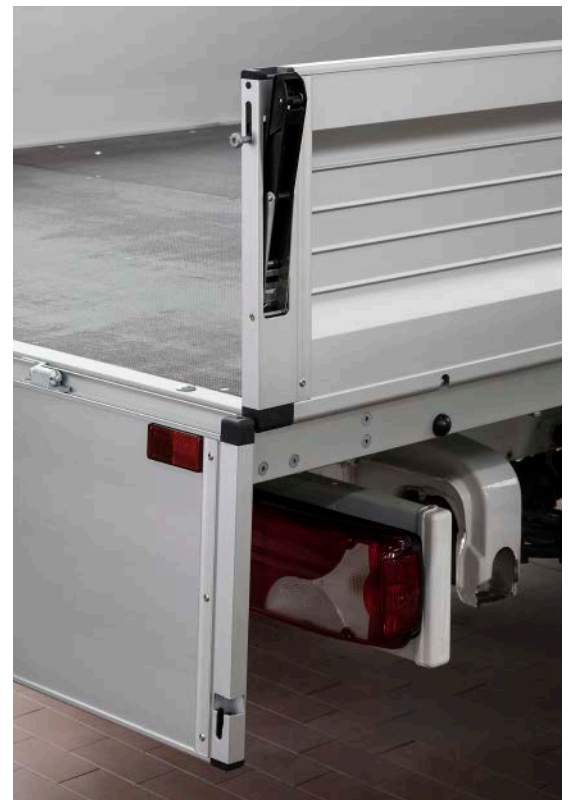
## HENSCHEL PLATFORM BODIES

### SUBSTRUCTURE

- › The substructure is made out of 100% aluminium. Its low tare weight increases the carrying capacity of the vehicle, and thus gains 30% advantage over conventional platform bodies in this respect.
- › All components are bolted, not welded. This makes them less susceptible to corrosion.
- › All visible components are anodised.
- › Consoles bolted to the subframe are factory-integrated with the platform body and prepared to the specific dimensions – this ensures the quick and easy installation of the body on the vehicle.

### PLATFORM

- › Side boards with anodised aluminium profiles are light-weight and corrosion resistant. The standard height of the side board is 400 mm.
- › The integrated locks (Kinnegrip™ T50) are made out of aluminium and plastic. They are particularly simple and easy to use.
- › The locking lever opens completely upwards. It does not protrude from the board and thus it doesn't present a risk of injury.
- › In the closed position, levers are completely hidden in the side profile of the board.
- › The rear board is equipped with a folding step with a safety lock to easily get on and off the loading area.
- › The lashing rings (according to DIN 75410-1 / EN 12640 – for securing the load in compliance with regulations) are embedded in the floor.
- › The side boards can be easily removed without tools.





Folding step



Hinge with side board

Integrated locking system (Kinnegrip™ T50)

## HENSCHEL PLATFORM BODIES

### FLOOR

- › Due to its top coating, the multi-laminated plywood with a screen-printed surface is particularly durable, abrasion-resistant and non-slip.
- › As it is bolted, the floor can be replaced when necessary.
- › Environmentally-friendly production with a certified environmental management system – 100% of the trees come from FSC-certified resources.
- › The edges are impregnated along the entire perimeter. This ensures a longer working life.

Of course, we also supply hardware: for example, bulkhead-gantry, tail gantry rack and fenders.

Lashing ring embedded in the floor





Lashing ring with lashing strap



## HENSCHEL OPTIONS AND ACCESSORIES

- › Bulkhead-gantry
- › Tail gantry rack
- › Fender for any vehicle model with single and twin wheels
- › Side board extensions (aluminium 400 mm or foliage grid extensions 700 mm high)
- › Extension of the subframe for mounting a loading crane or tool cabinet behind the driver's cab
- › Side boards made of steel
- › Painted aluminium side boards
- › Tarpaulin framework (with or without tarpaulin)
- › Tool box and tool cabinet
- › Tank nozzle mount
- › Lamp holder
- › Lateral underride guard

The options and accessories are optimal adapted to our bodies and offer a large variety of possibilities for your individual requirements. Everything can be tailored to the customer's individual needs. We are happy to offer advice about individual solutions and assist in the implementation of special requests.

Foliage grid extension







Fender



Tool cabinet (similar figure)



Tool box



Tool cabinet (similar figure)



Bulkhead-gantry painted in aluminium colour



Bulkhead-gantry painted in grey

## HENSCHEL OPTIONS AND ACCESSORIES

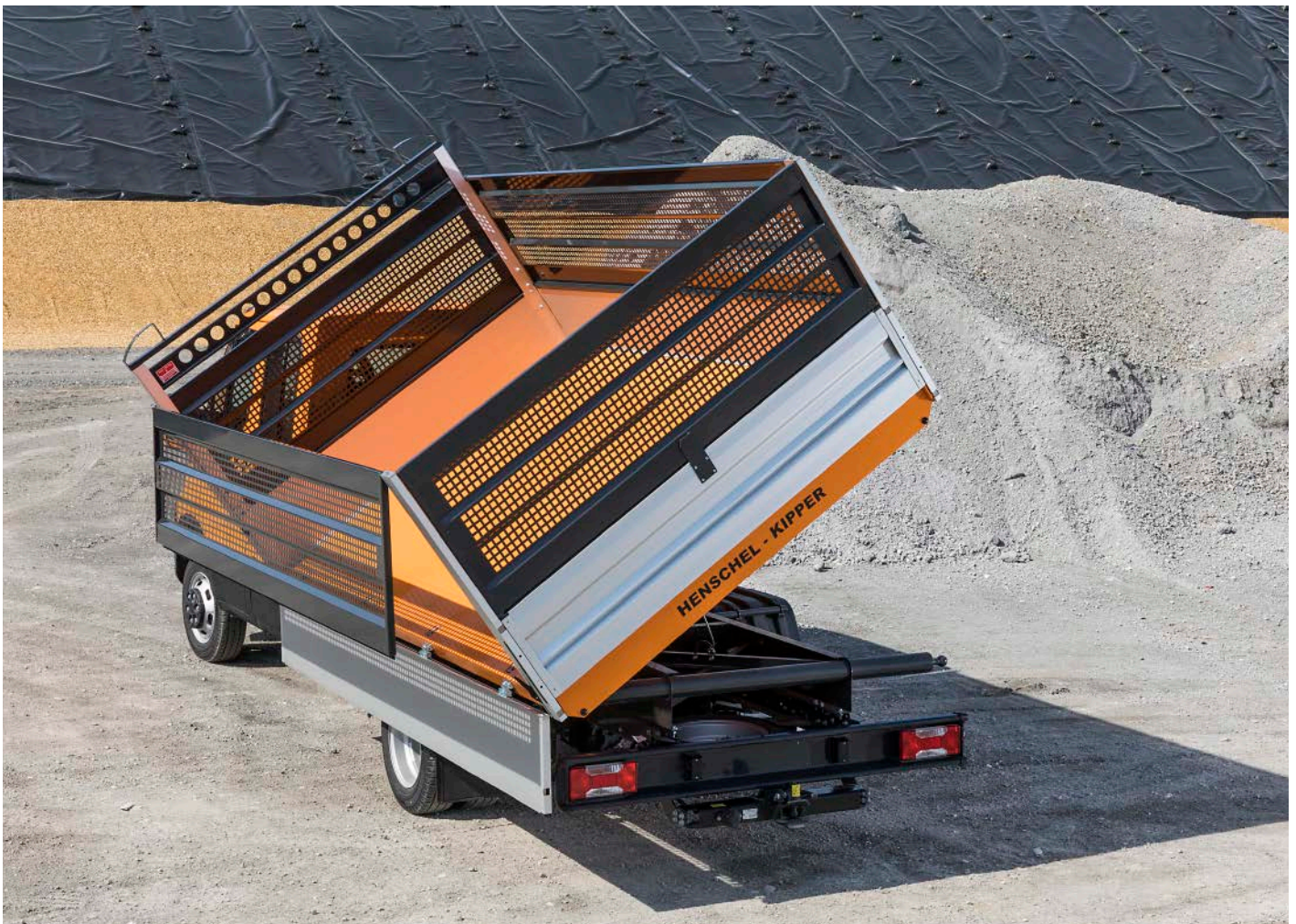
We look far into the future and want our bodies to be used as long as possible. Therefore, our individual components are also available as spare parts: for example side boards, locks or hinges.

As our bodies have a modular construction, any single component can be easily replaced – usually without tools or professional help.

Of course, we always have even the smallest components in stock so they can be immediately available.

We are always happy to offer advice and assistance whatever the case may be. Please contact us.

For example, a special colour for municipal vehicles in RAL 2011 colour (deep orange)





Tarpaulin framework with tarpaulin



Tarpaulin framework



Extension of the subframe for mounting a loading crane or a tool box behind the driver's cab



Tail gantry rack

**SUPPLIER OF COMPONENTS FOR THE AUTOMOTIVE INDUSTRY**

Especially for our customers in the automotive industry, we offer a range of comprehensive services. We will design components, produce them in serial in lean terms – and we will take care of installation and service.

**DESIGN**

We have extensive experience in the field of CAD and CAE, which helps us plan and calculate particularly complex modular components.

**SERIAL PRODUCTION**

Also in the field of serial production we guarantee high flexibility. Therefore, even in cases of large quantity of elements, we can still manufacture tailor-made components.

**LEAN PRODUCTION**

Our lean production processes allow us to obtain an optimal level of performance and processing.

**JUST-IN-TIME PRODUCTION**

Thanks to optimized production processes and flow of materials, we can provide just-in-time production and delivery in coordination with our customers.

**INSTALLATION AND SERVICE**

We do initial installation and commissioning of individual components. We also offer packaging and spare parts services.





## AUTOMOTIVE INNOVATIONS - OUR EXPERIENCE FOR THE FUTURE

We are consistently driven by the following aims in all areas of our company. This applies today and for the future:

### WE ARE PARTNERS TO OUR CUSTOMERS.

The success of our customers has been our driving force for more than 30 years. Top quality and competence in the field of processing, machining and assembly are self-evident for us. We want our customers to be able to rely on us completely. Therefore, we carefully listen to them and we strictly adapt to their needs. Together we develop customized solutions and adapt to any requirements to be able to obtain optimal coordination between the vehicle chassis, requirements and body.

Our own team for quality management also guarantees optimum control of all project specifications and we ensure 100% traceability.

### OUR EMPLOYEES ARE OUR GREATEST ASSETS.

We continuously invest in state-of-the-art machinery, production locations and product innovations.

However, only our employees are a guarantee for the future of our company. For this reason we are especially active in education and training, ensuring the constant improvement of all our employees' qualifications.

We are committed to the health and wellbeing of our employees. For this reason we provide modern, safe and ergonomically equipped workplaces in all our production plants.

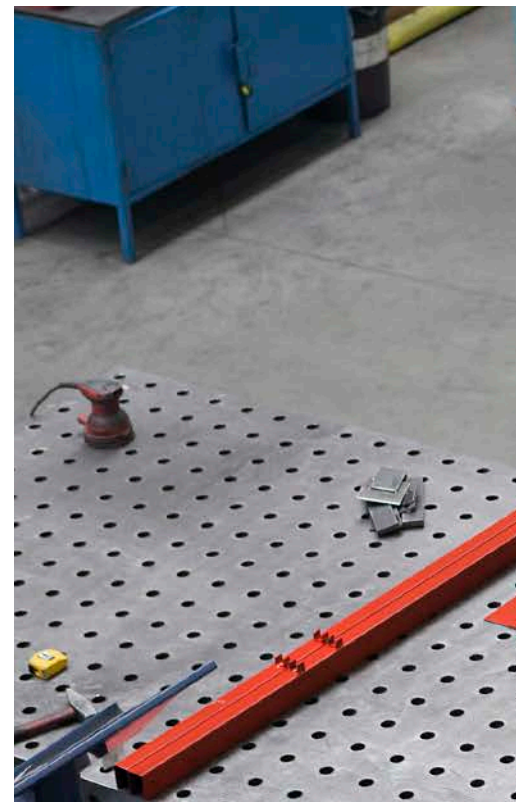
### WE CARE FOR THE ENVIRONMENT.

The economic success of our company must not be achieved at the expense of the environment. Because we represent a large enterprise, we are aware of our responsibility for the future of the planet. Sustainability is not a blank slogan for us, but a standard which we are committed to in our daily activities. That's why we do everything to ensure that our production processes save natural resources and are carried out with maximum consistency. We do this, for example, through the implementation of environmentally-friendly processes and materials such as nano-ceramic pre-treatment or the wooden floors made of screen-printed boards.

HENSCHEL ENGINEERING AUTOMOTIVE is part of TELEMOND Holding, a company with more than 50 years of experience known all over Europe.

### SOME MILESTONES IN OUR COMPANY HISTORY

- 1985 Launching serial production of platform bodies for Ford and Mercedes-Benz
- 1992 Platform bodies for new MB Sprinter T1
- 2000 Launching production of Henschel 3-way tipper of the company's own design
- 2002 Launching serial deliveries of 3-way tippers for Citroën Jumper
- 2003 Launching serial deliveries of platform bodies for VW T5
- 2005 Launching the assembly plant with welding robots for platform bodies
- 2012 Launching serial deliveries of 3-way tippers for Iveco Daily
- 2013 Introduction of a new, much lighter HENSCHEL 3-way tipper
- 2015 Launching serial deliveries of 3-way tippers for VW Transporter
- 2016 Launching serial deliveries of 3-way tippers and platform bodies for VW Crafter
- 2017 Introduction of new, much lighter HENSCHEL aluminium platform bodies



## QUALITY CONTROL

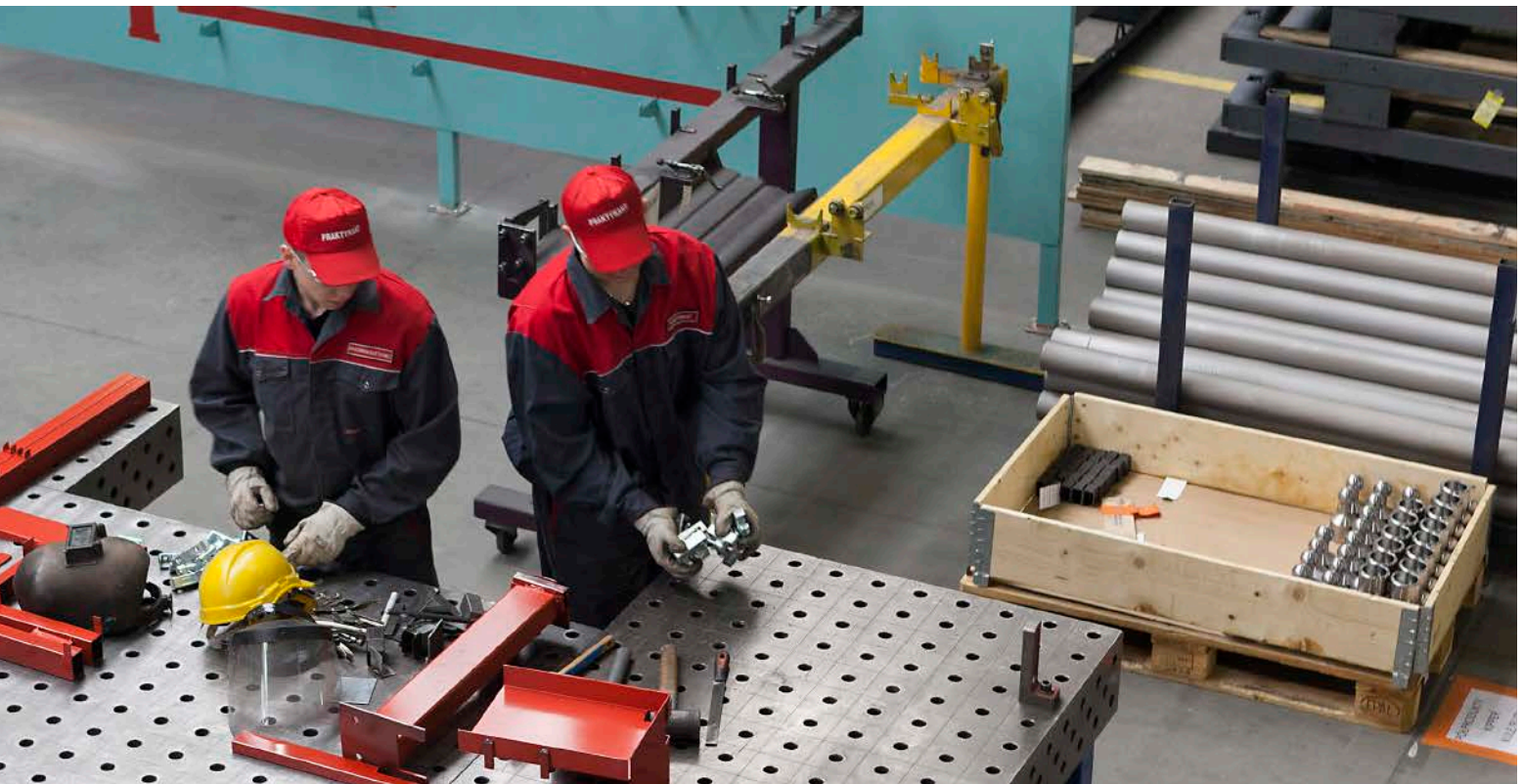
We have very high expectations: our services, safety at our workplaces and environmental protection. In order to meet these requirements, we are regularly certified in all areas.

Our certificates are an important part of our quality assurance – and an incentive to be still a little better. Our own quality management team also ensures that all project specifications have been optimally implemented to 100 percent. We guarantee 100% traceability.

### OUR CERTIFICATES

- > IATF 16949:2016
- > ISO 9001:2015
- > ISO 14001:2015
- > PN-N-18001:2004
- > EN ISO 3834-2

All current certificates can be found under:  
[www.henschel-automotive.com/certificates.html](http://www.henschel-automotive.com/certificates.html)



**WE ARE AT YOUR SERVICE - PLEASE CONTACT US**



**AUTO TRANSFORM**

3 Harbour Ridge Drive  
Stone Hill Business Park, Wiri  
Auckland 2104

**sales@autotransform.co.nz**

**09 580 0477**

**autotransform.co.nz**